



Accessibility Guide for Matfen Annexe

info@lakeholidaycottages.co.uk, 07808989000,

Contact for accessibility enquiries: Sheila Lake



Welcome

Fully self-contained beautifully presented Annexe in the centre of the beautiful un-spoilt village of Matfen. Sleeps 2 in either twin beds or super king, good sized ensuite shower room and living room with kitchen area. Enclosed private outside space to relax in the summer.

At a Glance

Level Access

- The main entrance has 2 steps. There is no lift and no ramp.

Access with steps

- There are steps from the main entrance to:
 - Bedroom
 - Living area
 - Rear patio

Bedrooms

- We have non-allergic bedding.

Hearing

- The (bedroom) TVs have subtitles.

Getting here

3 West Farm Lane
Matfen
NE20 0QZ

Travel by public transport

- You can get to Matfen Annexe by bus.
- The nearest bus stop is in the village by the Black Bull Pub. The bus stop is 0.1 miles / 0.2 km from Matfen Annexe.

Travel by taxi

- You can get a taxi with Hunter's Taxi's 07786620661

Parking

- We have a car park. The parking is less than 50 meters from the main entrance. Parking is free.
- You can be dropped off on the driveway at the front of the property, the main entrance is at the rear. From the parking to the main entrance, there is 1 step. There is no ramp and no lift.



Entrance is via a path at the left-hand side of the Annexe

Arrival

Path to main entrance

- From the street to the main entrance, there is 1 step. There is no ramp and no lift.
- The path is sloped.

Main entrance

- The door is 800mm wide.
- The main entrance has 2 steps.
- The main door is side hung and manual.
- When you arrive, we can help carry your luggage.
- As long as prearranged and we are home.



2 steps in and one on the other side of the door.

Getting around inside

Visual Impairment - General Information

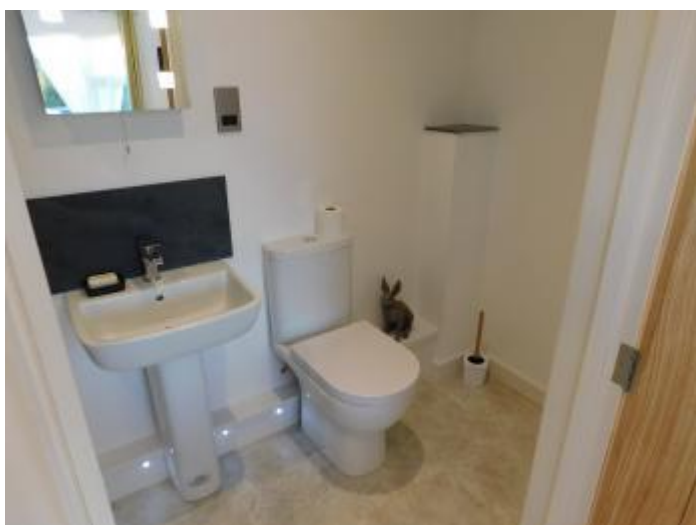


Good lighting



Bedrooms

- All bedrooms have windows.
- Bedrooms have wall lights, spotlights and natural daylight.
- Lights are LED. TVs have subtitles.
- All bedrooms are non-smoking.
- We have non-allergic bedding.
- No bedrooms have fitted carpets.
- We have wi-fi free bedrooms, for visitors with electro-sensitivity.
- We can move the bedroom furniture, to improve accessibility.
- The bedroom nearest the main entrance has 2 steps.
- All bedrooms are ensuite.
- We have bathrooms with a separate shower.
- The direction of transfer onto the toilet is to the left.



Bathroom

Self catering kitchen

Main

- We have an open plan kitchen.
- From the main entrance to the kitchen, there is 1 step. There is no lift and no ramp.
- The work surface is available with clear under space and available at a height between 650mm and 900mm.
- The table and plates have high colour contrast.



Kitchen area

Lounge

Living area

- From the main entrance to the lounge, there is 1 step. There is no lift and no ramp.



Living area

Getting around outside

Rear patio

- From the main entrance to the area, there is 1 step.



Outside area

Customer care support

Accessibility equipment

- For a list of more items, please go to [http://www.disabilitynorth.org.uk/dn-exhibitors/north-east-mobility-solutions....](http://www.disabilitynorth.org.uk/dn-exhibitors/north-east-mobility-solutions...)
- Front driveway
- You can hire mobility equipment from Disability North by calling 01289 331055.

Guide last updated: 19/06/24